



**MEGAMAK**

CRUSHING & SCREENING PLANTS







[www.megamak.net](http://www.megamak.net)

+90 505 530 01 79



# About Megamak



Investments made by MEGAMAK FOREIGN TRADE LIMITED COMPANY without sacrificing quality Thanks to this, it continues on its way by diversifying its production range day by day. MEGAMAK, 1997 IT WAS ESTABLISHED IN YEARS FOR PROJECT AND ENGINEERING PRODUCTION SERVICES SOLUTIONS. OUR COMPANY WITH MORE THAN 20 YEARS OF EXPERIENCE, OUR COMPANY IS VERY INTERESTED IN DOMESTIC AND INTERNATIONAL MARKETS. IT HAS REALIZED A NUMBER OF SUCCESSFUL PROJECTS AND THE LEADING MACHINERY AND HAS BEEN RELIABLE SUPPLIER TO CONSTRUCTION COMPANIES. The company's production program includes stone crushing, screening and washing plants, bulk material handling and stacking plants, screw conveyors, silos, crushers, mobile or fixed concrete batching plants, Bracket and spare parts and equipment, While serving with our experienced staff in export and sales marketing. Our main principle is SERVICE. WORKING WITHOUT COMPROMISE ON OUR QUALITY.

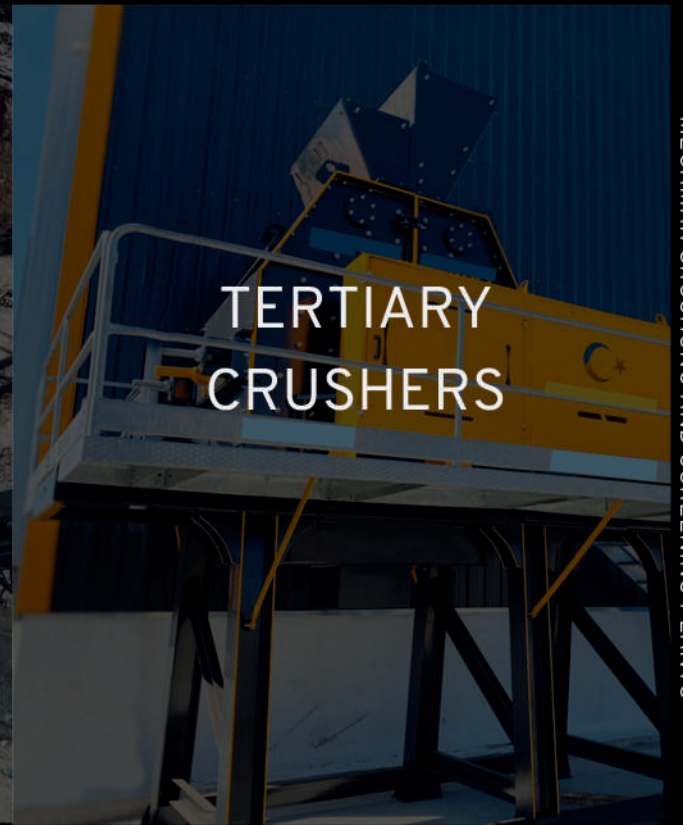
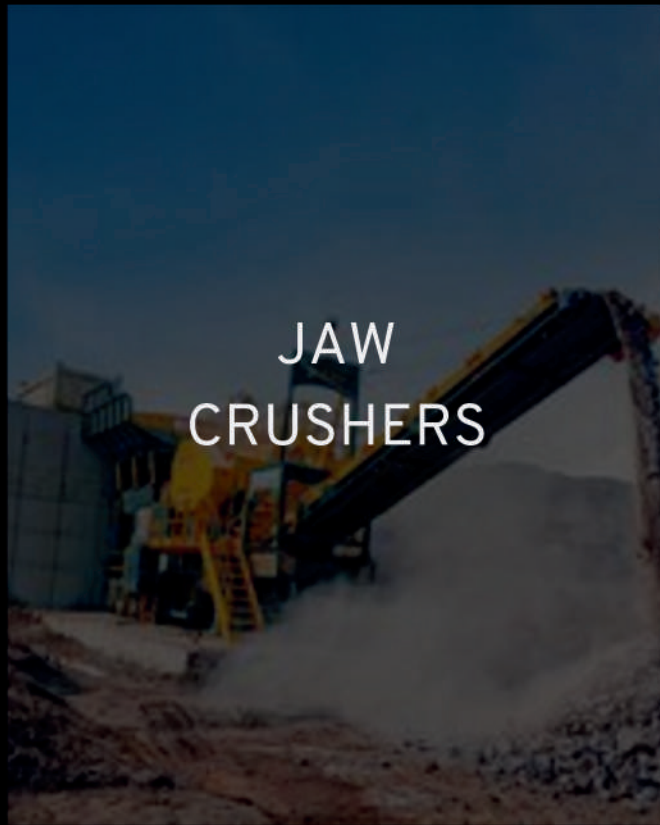
**OUR MISSION** Our after-sales services and product services to meet customer needs and expectations whenever they want. To provide full-fledged service with our range.

**OUR VISION** Being able to keep up with the changing structure of the sector and make our name heard in Europe





# CRUSHING & SCREENING PLANTS









TYPE	DIMENSIONS (MM)	POWER (kW - RPM)	CAPACITY (t/h)	WEIGHT (kg)	GROUP
MG-02	610 x 330	30 - 1500	30 - 90	600	PRIMER
MG-03	900 x 650	75 - 1500	50 - 200	11,4	PRIMER
MG-04	900 x 200	30 - 1500	50 - 75	5,96	SEKONDER
MG-07	1100 x 850	132 - 1500	100 - 300	33	PRIMER
MG-11	1300 x 1000	160 - 1500	275 - 600	43	PRIMER
MG-12	1100 x 350	75 - 1500	100 - 150	11	SEKONDER

MEGAMAK offers a comprehensive range of crushing and screening equipment, including various models of primary and secondary crushers, designed to suit different material sizes and production needs. Our machines are built for efficiency, reliability, and durability, making them ideal for both small and large-scale operations.

The crushers, such as MG-02, MG-03, MG-07, MG-11, and others, vary in dimensions, power, and capacity, allowing us to tailor solutions for specific project requirements. Whether you need a primary crusher for the initial breaking down of large materials or a secondary crusher to refine the output further, we have the right equipment to get the job done efficiently.

All components, including the feeders, crushers, screens, sand augers, and belt conveyors, work in harmony to create full crushing and screening plants. These plants are custom-built to meet the unique needs of various projects, ensuring smooth operation and optimal performance. By utilizing MEGAMAK's crushers, clients can expect high output, reduced operational costs, and equipment that stands up to the toughest conditions.

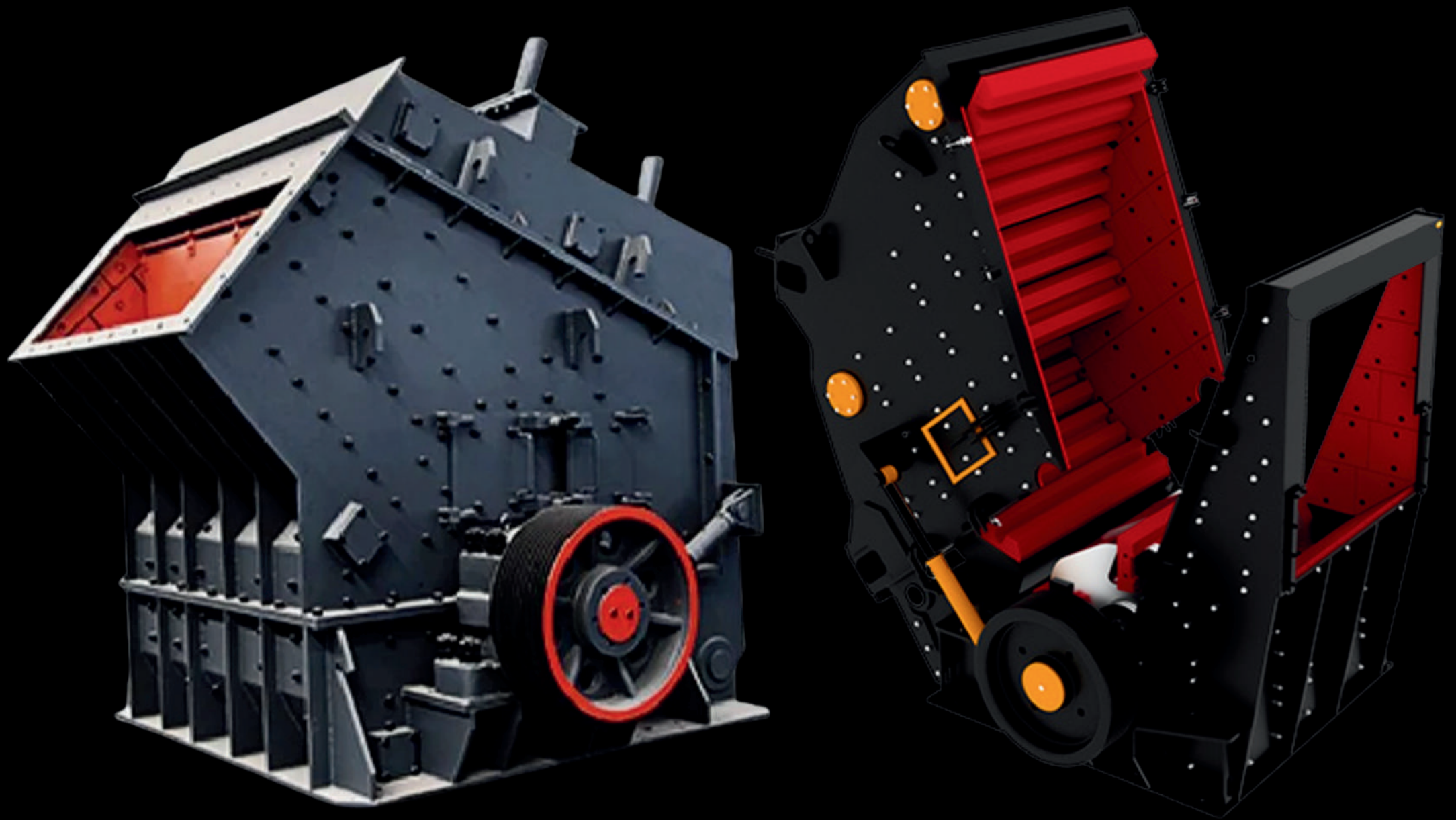
At MEGAMAK, we specialize in delivering complete crushing and screening solutions, combining our robust range of machines into integrated plants that streamline production and ensure high-quality end results.







# PRIMARY IMPACT CRUSHERS





TYPE	ROTOR DIMENSIONS (MM)	POWER (kW - RPM)	MAX FEED SIZE (MM)	CAPACITY (t/h)	WEIGHT (kg)
PDK 1418	1400 x 1800	315-355 / 1500	1200	600 - 800	33
PDK-01	1400 x 1500	200 / 1500	1000	400 - 600	30
PDK-02	1400 x 1300	250 / 1500	900	200 - 300	27

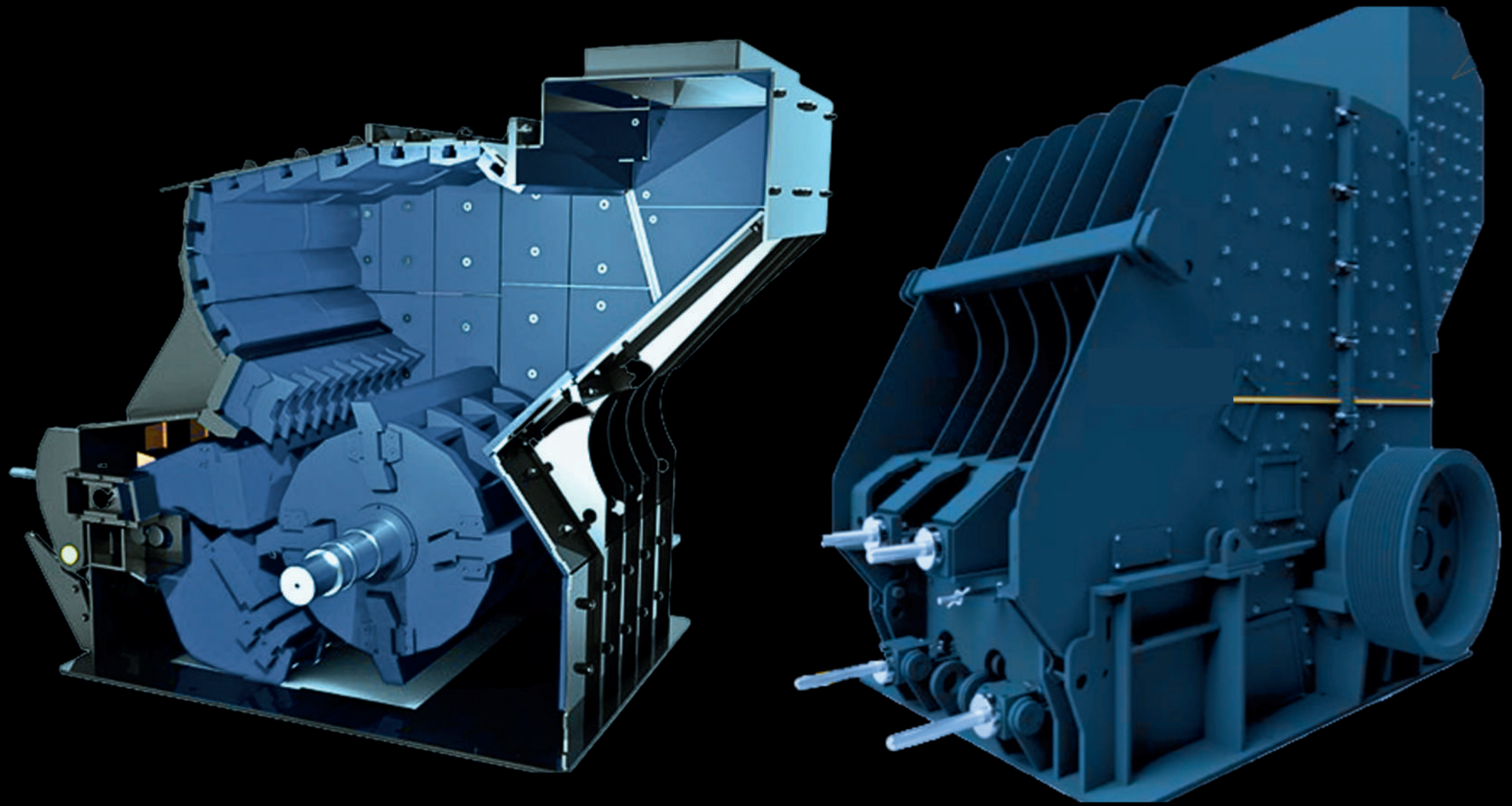
MEGAMAK's Primary Impact Crushers are designed to handle large feed sizes, offering superior crushing performance for high-capacity operations. These machines are particularly suited for the initial stage of material reduction, breaking down hard and abrasive materials like limestone and granite with ease.

With robust rotors and powerful motors, the PDK 1418, PDK-01, and PDK-02 models deliver efficient and reliable performance. The PDK 1418 can process feed sizes up to 1200 mm, with a capacity ranging from 600 to 800 tons per hour, making it ideal for heavy-duty applications. The PDK-01 and PDK-02 models, while slightly smaller, also offer impressive capabilities, with maximum feed sizes of 1000 mm and 900 mm, and capacities of 400-600 t/h and 200-300 t/h, respectively.

These crushers are built with durability and ease of maintenance in mind, minimizing downtime and ensuring long-term reliability. Their ability to handle large material volumes with efficiency makes them an essential part of any high-output crushing operation.



# SECONDARY IMPACT CRUSHERS





TYPE	ROTOR DIMENSIONS (MM)	POWER (kW - RPM)	MAX FEED SIZE (MM)	CAPACITY (t/h)	WEIGHT (kg)
PST-0,75	750 x 1100	132 / 1500	250	75 - 100	18,5
PST-01	1000 x 1100	160 / 1500	250	100 - 150	20
PST-02	1250 x 1100	200 / 1500	250	200 - 250	26
PST-03	1500 x 1100	250-315 / 1500	250	250 - 300	28

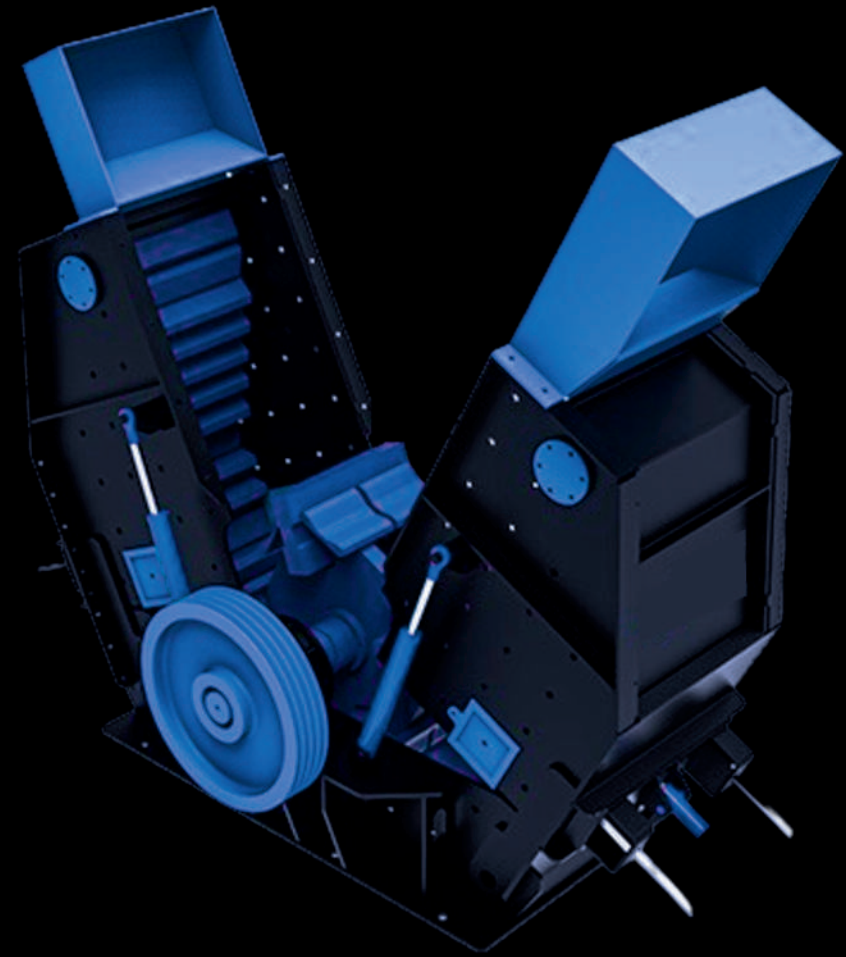
MEGAMAK's Secondary Impact Crushers are engineered to deliver high-efficiency material reduction after the primary crushing stage. These machines are ideal for producing precisely sized and shaped materials for use in various applications, such as road construction, concrete production, and aggregate refining.

The PST series, including models like PST-0,75, PST-01, PST-02, and PST-03, are capable of processing feed sizes up to 250 mm, ensuring high reduction ratios while maintaining the quality and shape of the final product. The capacities of these crushers range from 75 to 300 tons per hour, depending on the model, making them versatile options for mid to large-scale operations.

With adjustable settings, MEGAMAK's secondary impact crushers allow for precise control of the output size, ensuring consistency and meeting project-specific requirements. These crushers are built with durability and operational efficiency in mind, featuring wear-resistant parts that ensure long-term reliability and reduced maintenance needs. Whether integrated into a full crushing plant or used individually, these machines play a key role in producing high-quality materials for various industries.



# TERTIARY CRUSHERS





TYPE	ROTOR DIMENSIONS (MM)	POWER (kW - RPM)	MAX FEED SIZE (MM)	CAPACITY (t/h)	WEIGHT (kg)
TRS-75	1040 x 750	160 / 1500	70 - 100	100	14
TRS-100	1040 x 1000	200 / 1500	70 - 100	150	16
TRS-130	1040 x 1300	250 / 1500	70 - 100	200	18
TRS-150	1040 x 1500	250-315 / 1500	100 - 120	250	20

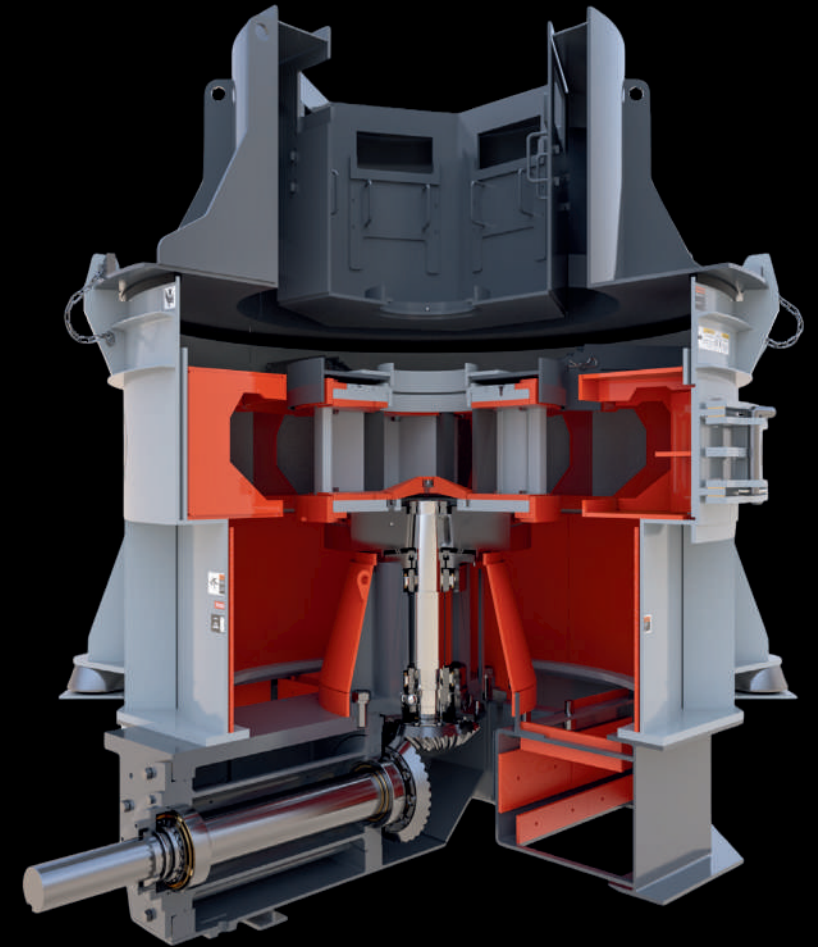
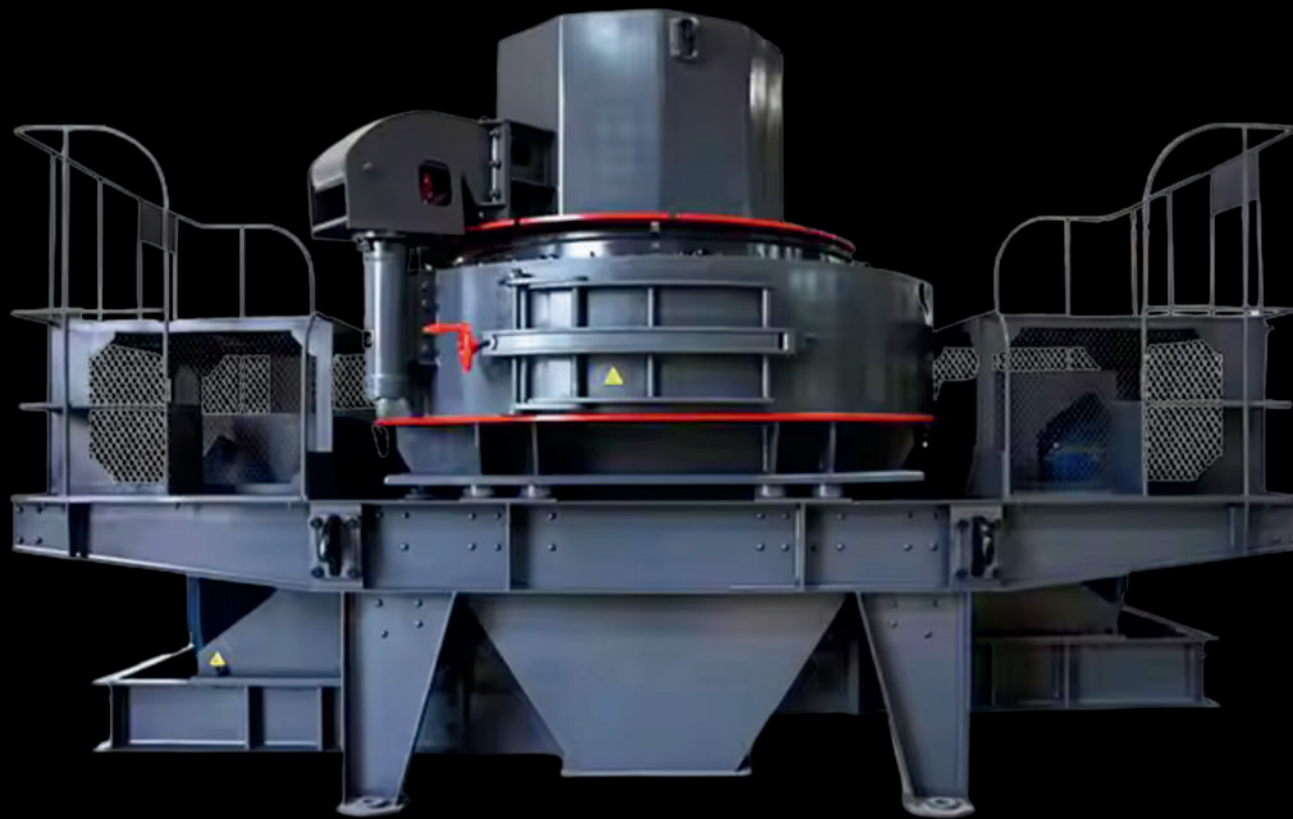
MEGAMAK's tertiary impact crushers are designed to handle the final stage of material reduction, ensuring precise shaping and refinement of the material. These machines excel at producing fine, uniform aggregates for industries requiring high-quality, well-graded products, such as concrete production and asphalt mixing.

The TRS series of tertiary crushers, including models TRS-75, TRS-100, TRS-130, and TRS-150, feature powerful rotors and advanced designs capable of processing feed sizes between 70-120 mm. These crushers ensure fine output with capacities ranging from 100 to 250 tons per hour, depending on the model.

MEGAMAK's tertiary impact crushers are built to last, featuring wear-resistant components and efficient energy use. They are also designed for easy maintenance, with accessible parts for quick adjustments and replacements. These crushers, when integrated with primary and secondary crushers, complete the crushing process by delivering high-quality, finely crushed material that meets specific project requirements, making them an essential part of any modern crushing operation.



# VERTICAL SHAFT IMPACT CRUSHERS





TYPE	MOTOR (kW )	MOTOR SPEED (RPM)	CAPACITY (t/h)	SPEED (RPM)	WEIGHT (kg)	MAX. FEEDING SIZE (MM)
VSIMGM-255	(132/185)*2	1500	150-250	1300-1700	13000	50
VSIMGM-135	132/185	1500	80-160	1300-1700	8500	40

Vertical Shaft Impact (VSI) crushers are highly versatile machines used in various stages of crushing, often as third or fourth-stage crushers. VSI units are particularly effective at producing fine aggregate and shaping material into precise particle sizes. For VSI crushers, capacities generally range depending on the model and the materials being processed.

For example, VSI crushers like REMco's RockMax series typically operate in open or closed circuits, handling feed sizes from around 100mm (4 inches) down to fine sands, with production capacities varying significantly. These machines can produce anywhere from 100 to 600 tons per hour, depending on the specific application and material hardness.

At MEGAMAK, our VSI crushers are designed to meet similar performance standards, tailored to the requirements of different projects. Whether it's for small-scale operations or high-capacity crushing systems, we offer robust VSI solutions capable of handling a wide range of feed sizes and achieving high-quality aggregate production.

# VIBRATING SCREENS



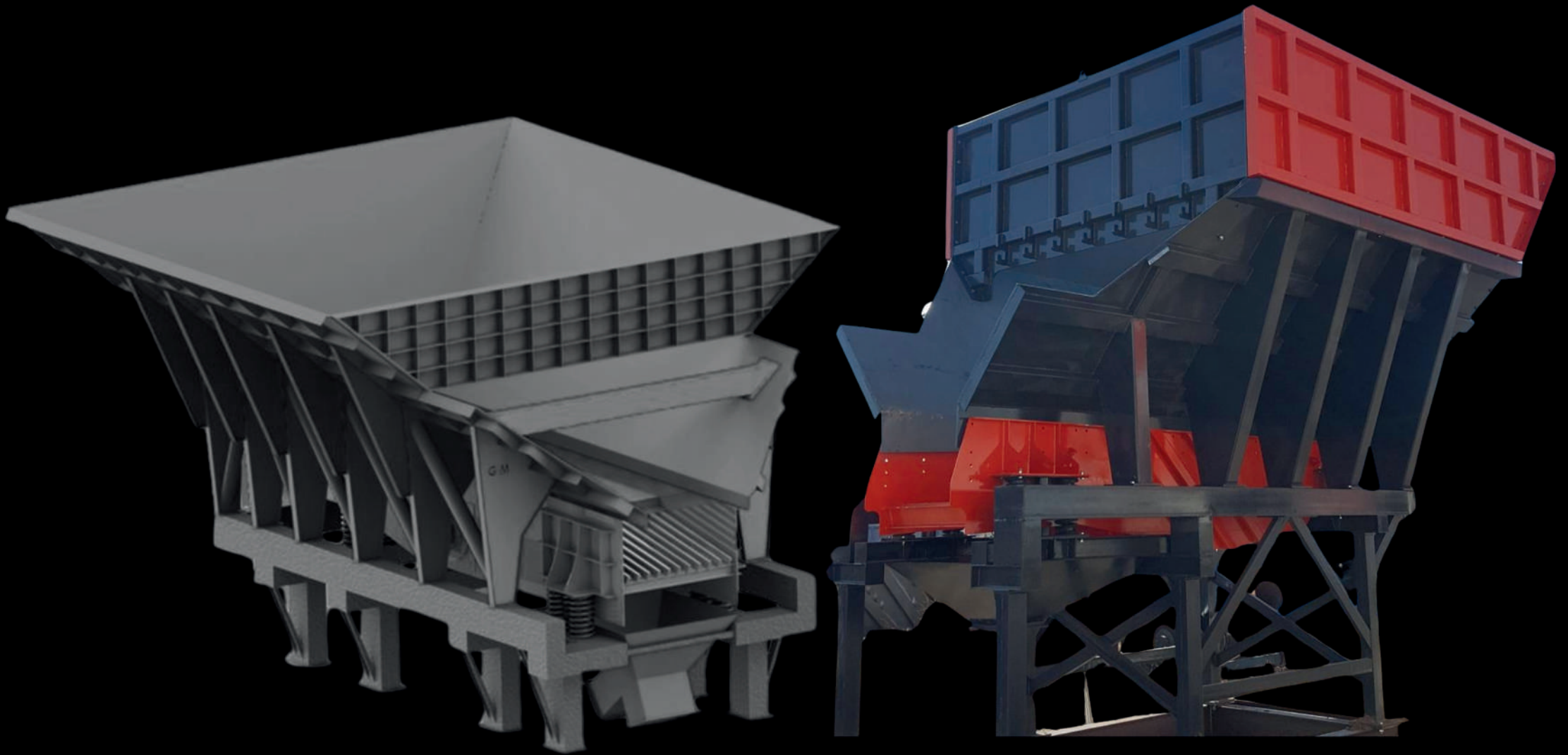


E-MGM	MOTOR (KW)	MOTOR SPEED (RPM)	CAPACITY (t/h)	SPEED (RPM)
8000*2000 4 DECKS	37	1500	240-320	900-990
6000*2400 4 DECKS	30	1500	210-280	900-990
6000*2000 4 DECKS	22	1500	180-240	900-990
5000*1800 4 DECKS	18,5	1500	130-180	900-990
4000*1500 4 DECKS	15	1500	90-120	900-990
3000*1200 4 DECKS	7,5	1500	50-70	900-990

Vibrating screens are used to separate materials based on size, ensuring the right product granularity for further processing or final use. They are designed to handle heavy loads and provide precise separation.

- LONG LASTING BEARINGS THANKS TO SPECIALLY DESIGNED BEARING SYSTEM
- LARGE SPACES BETWEEN DECKS AND EASY WIRE TENSIONING SYSTEM
- LATERAL CHEEK PLATES ARE PREPARED BY COMPUTER-MONITORED PLASMA CUTTING MACHINE
- HOMOGENEOUS DISTRIBUTION OF VIBRATIONS THANKS TO THE ECCENTRIC SHAFT DRIVE SYSTEM
- LONG LASTING BELTS AND HIGHLY EFFICIENT VIBRATIONS THANK TO SPECIALLY DESIGNED PULLEY
- EASILY REPLACEABLE SEGMENTED LINER PLATES IN DISCHARGE CHUTE AND ABRASION RESISTANT DISCHARGE CHUTE SYSTEM CREATING A "ROCK SHELF"

# VIBRATING FEEDERS



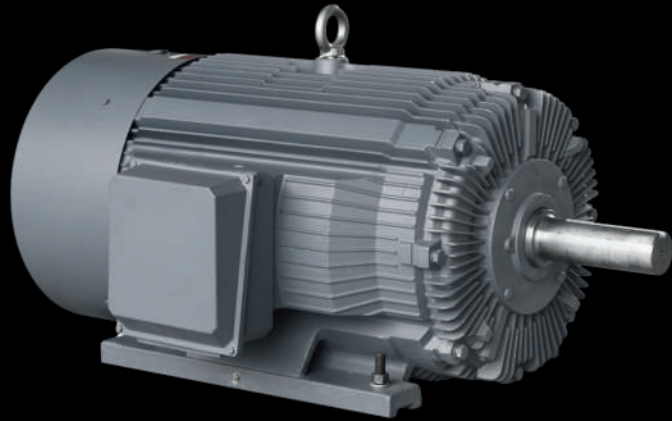


LOADING BIN	OPERATING SYSTEM	VOLUME (M3)
125	PNEUMATIC	125
100	PNEUMATIC	100
HOPPER FEEDER	MOTOR (KW)	VOLUME (M3)
50	2*2	50
30	2*1,5	30
25	2*1,1	25

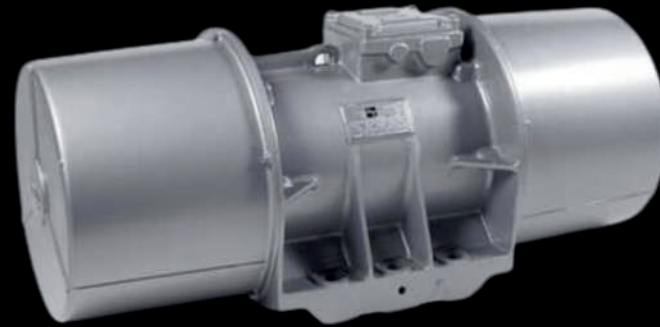
These feeders ensure a continuous and controlled flow of materials to the crushers. They handle materials of varying sizes and deliver them evenly to maximize crusher efficiency.

- RAPID AND EASSY VIBRATION ADJUSTMENTS
- FEEDING ADJUSTMENT THROUGH MECHANICALLY ADJUSTABLE COVER
- RAPID MATERIAL DISCHARGE THANKS TO PNEUMATIC COVERS OF LOADING BINS

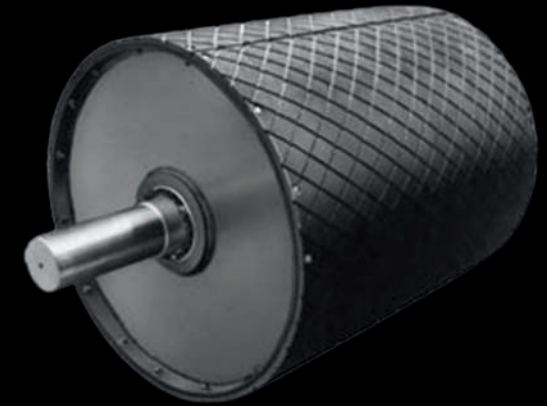
# SPARE PARTS



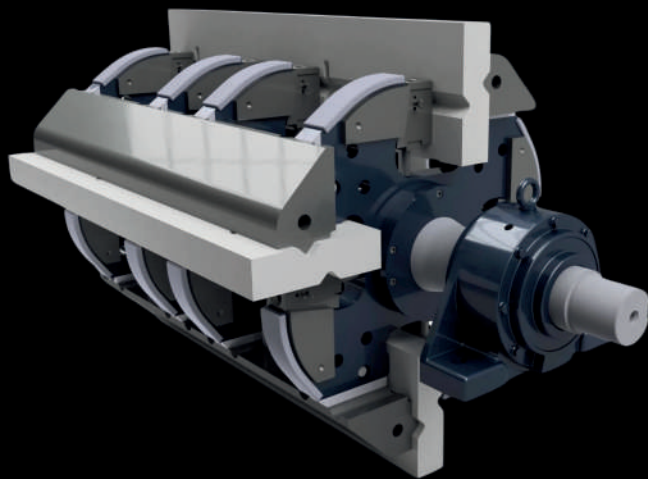
**DRIVE MOTOR**



**VIBRATING MOTOR**



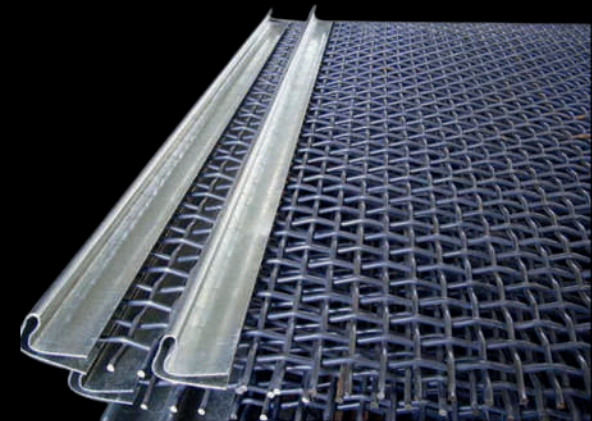
**DRUM**



**CRUSHER ROTOR**



**ROLLER**



**SCREEN MESH**

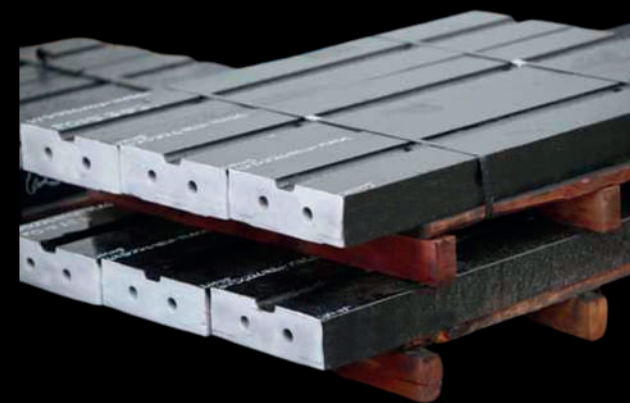




**SPRING**



**BEARING HOUSE**



**ROTOR HAMMERS**



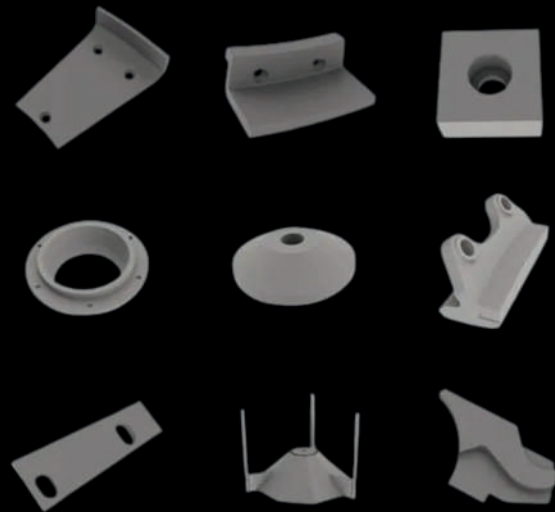
**FLYWHEELS**



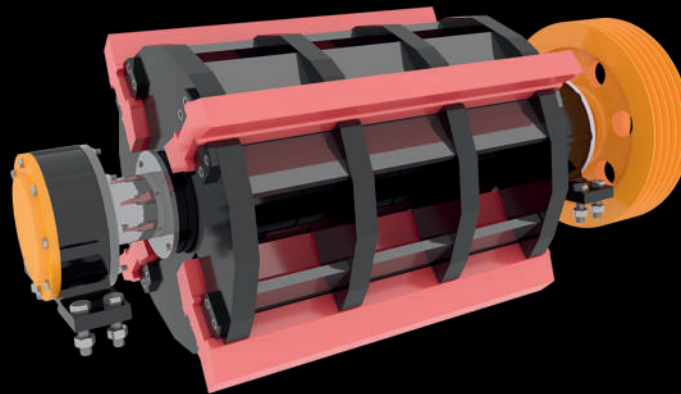
**CHEVRON RUBBER BAND**



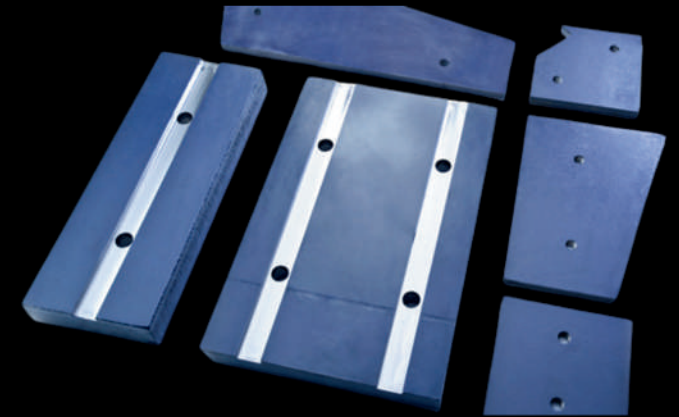
**PLAIN RUBBER BAND**



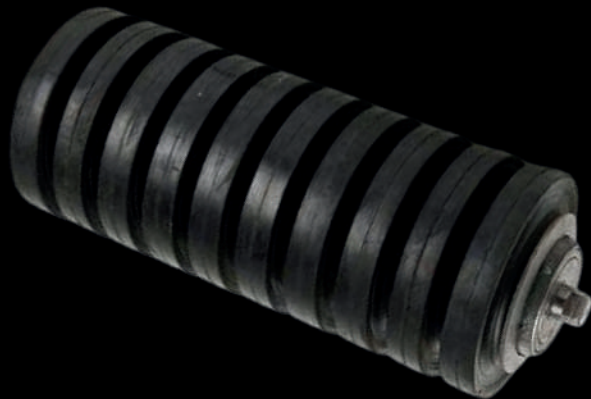
**VSI PARTS**



**IMPACT CRUSHER ROTOR**



**CRUSHER INTERNAL LINERS**



**CONVEYOR IMPACTOR  
ROLLERS**



**SCREEN SHAFT**



**SAND WASHER PARTS**



# REFERENCES

● MEGAMAK WAS HERE



**WE SUCCESSFULLY COMPLETED OVER 500 CONCRETE  
BATCHING AND CRUSHING & SCREENING PLANTS IN MORE  
THAN 20 COUNTRIES**



*Quality is never a coincidence*



## CONTACT US!



+90 505 530 01 79  
+90 552 347 22 87



+90 505 530 01 79  
+90 552 347 22 87



+90 505 530 01 79  
+90 552 347 22 87



info@megamak.net



www.megamak.net

